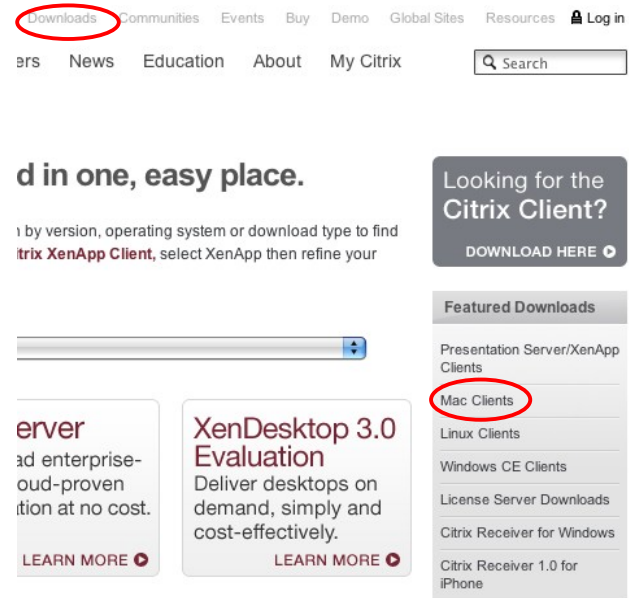


Accessing the Memorial Hospital Portal *Apple Macintosh Computer*

Memorial Hospital's Portal (mhportal.org) uses the Citrix Server technology to allow the accessing of hospital systems from anywhere with an Internet connection. In order to make use of the systems, you must first install the Citrix Client onto your computer. This software is freely available from Citrix's site for download and installation. Follow the steps below to get connected.

1. Access Citrix's website at <http://www.citrix.com>. At the top of the page, you will see a link for **Downloads**. Click this link. Now on the right hand side you will see **Mac Clients** listed under featured downloads. See the image to the right for illustrations of what to look for.



2. You will be taken to a page with several options for download. Most Mac users will use the top download that is titled "Universal Binary". If you have an older mac, you may need **Mac Clients** one of the other options.

Release Date: 12/12/2008

[Back to results](#)

View the list of countries that may have **export or import restrictions** for products containing strong (128-bit or greater) encryption.

OS X

Version 10.00.603 - Universal Binary English 12/12/08 5.0 MB .dmg.zip

Includes an additional fix for XenDesktop connections.

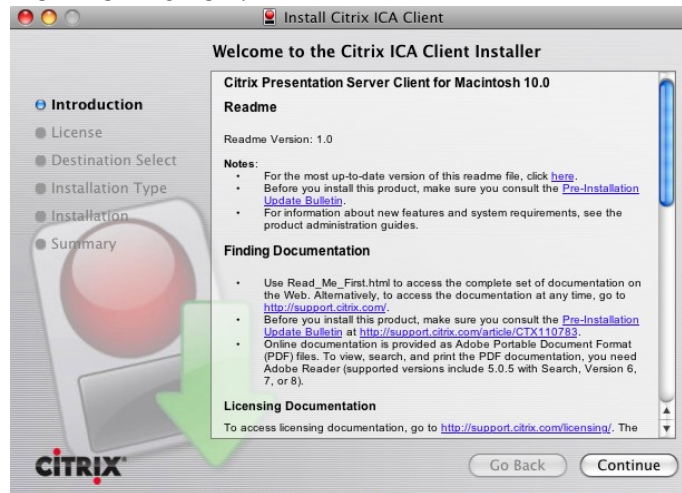
[Download](#) [Show Documentation](#)

Version 7.00.411 - PowerPC Mac OS 10.2 only English 11/20/06 3.0 MB .dmg.zip

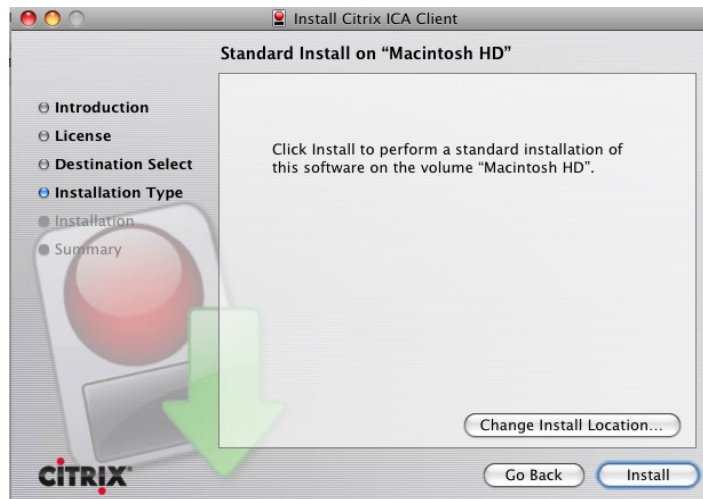
[Download](#) [Show Documentation](#)

3. Click to **Download** the software.
4. Depending on how your Mac is setup, the installation program may start automatically, or you may need to locate the file you downloaded and double click on it to mount the image and start the install.

5. The installation begins and will look like this image. Press the **Continue** button and Agree to the information.



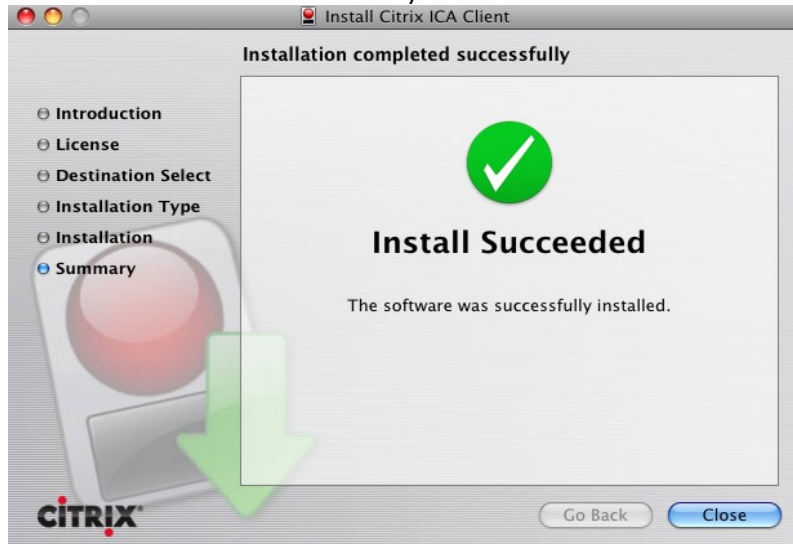
6. When prompted at this screen, just click **Install**.



7. Likely you will be prompted for your Name and Password to continue. Enter them and press **OK**.



8. Complete the installation and when you see this screen click **Close**.



9. The Citrix Client is now installed. Login to the portal through the links on www.mhportal.org. When you click on an application to launch, the Citrix program should open automatically and display a screen like this while the application loads. Just wait for the application to open and you can begin working.



10. When you are done working, you can close the application like normal, but to completely exit you must **Quit** the Citrix Client through the Menu at the top of the screen.

